

THE BRICKETTE™

by WESTERN TECHNOLOGY

Designed + Manufactured + Certified + Serviced in the USA

**EXPLOSION
PROOF
LIGHTING**



Model 2106 - Portable Explosion Proof LED Work Light

January 2025



**EXPLOSION
PROOF
LIGHTING**



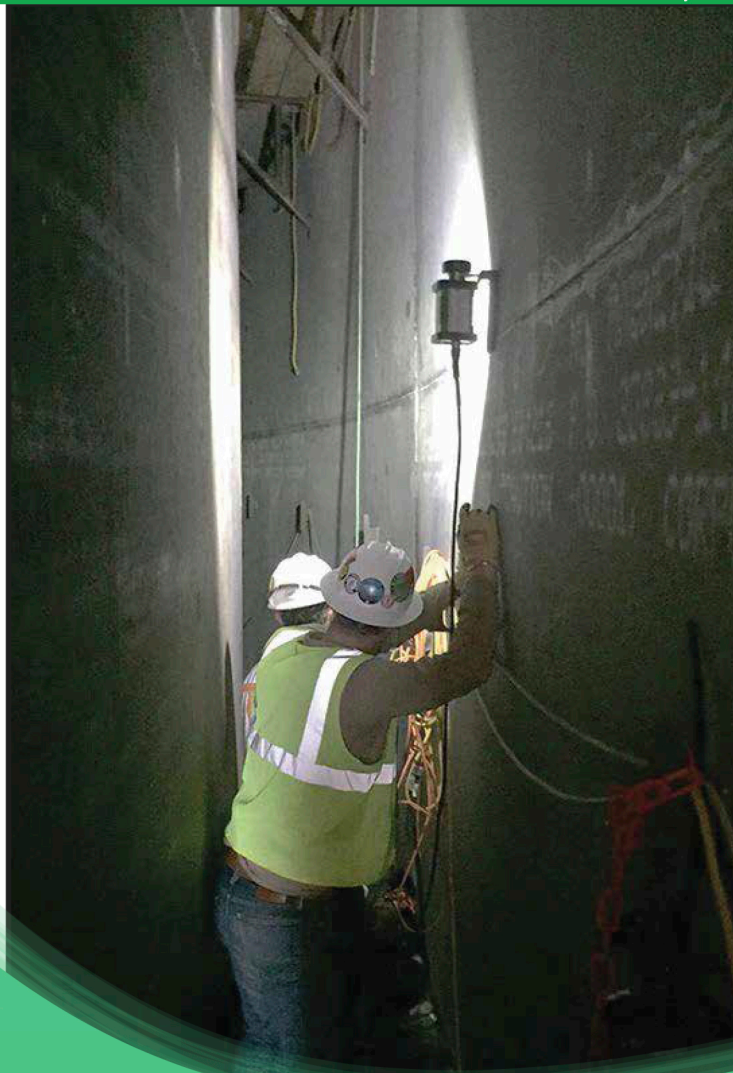
**Lumens+
Optics**



Product Features

Approved for:	Class I, Div 1 & 2, Groups C & D Class II, Div 1 & 2, Groups E, F, & G CSA Zones 1 & 2; Zones 20, 21, & 22
Conforms to:	UL Std's 153, 8750, 844
Certified to:	CSA Std's C22.2#s 12, 25, 30, 137, 250.13
Suitable for:	Wet Location Use (NEMA Type 6P)
Certified:	Portable Luminary (Portable Luminaire)
Temperature Rating:	T-code: T5 (-25°C to +40°C)
LED Color:	~6000K, CRI >70
Light Head Power:	21VDC, 800mA, LVLE
Light Output:	26,000 lux at 1', >2,500 lumens
Optic:	60° Reflective Optic Beam Angle
Weight:	3.5 lbs (light head only) 4.2-5.3 lbs (light head w/ handle)
Dimensions:	6"L x 2.9"W x 2.3"H
Body Material:	Machined solid blocks of 6061-T6 Aluminum, Polyurethane Bumpers
Accessories:	• Blast Shields • Dome Diffuser • Overspray Protection Bags

Designed + Manufactured + Certified + Serviced in the USA



BRICKette™
Magnetic Handle

**WTC Western
Technology**

